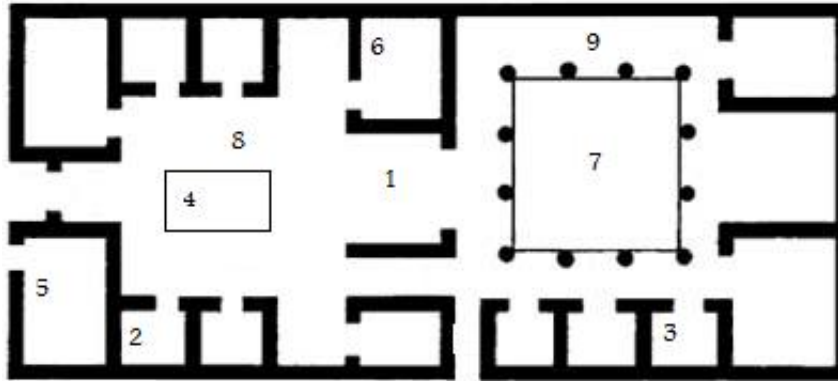


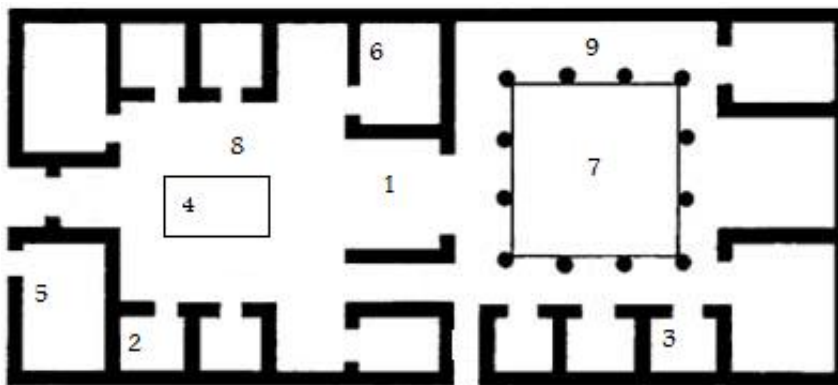


Romana Domus

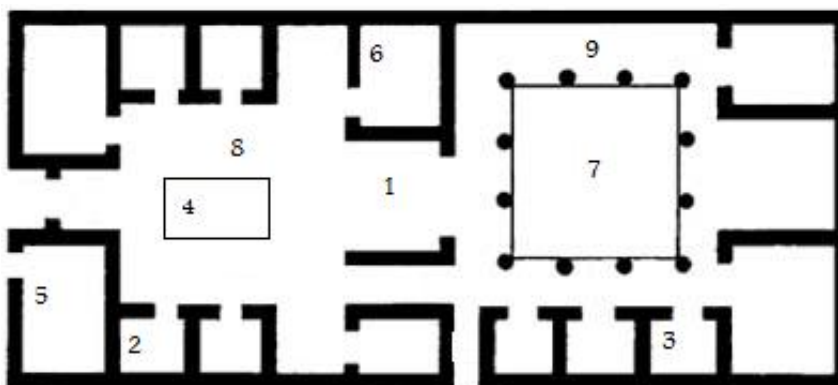
Identify the LATIN terms associated with the numbers on the floor plan. If you respond incorrectly, you will be given a hint with the correct answer. You may take this as many times as you like.



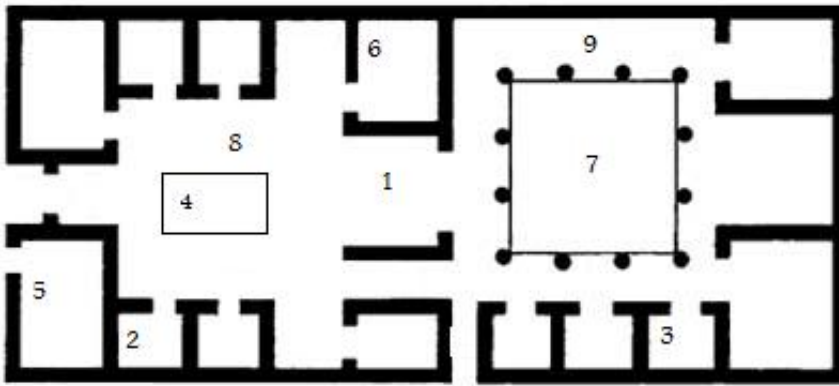
1. #7 on the floor plan (our word "horticulture" comes from this Latin word) = (10 points)



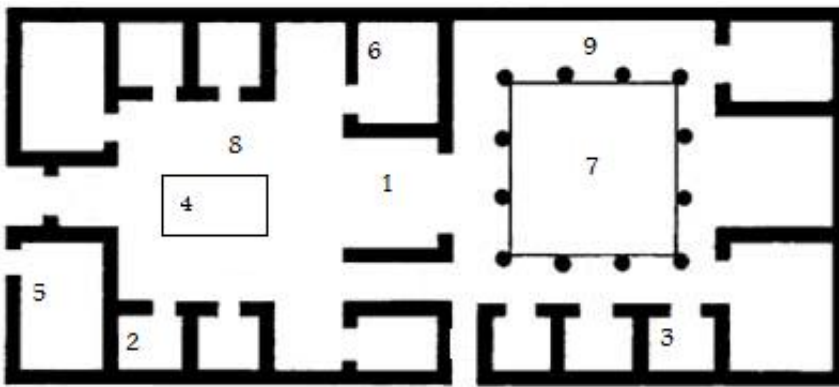
2. #1 on the floor plan = (10 points)



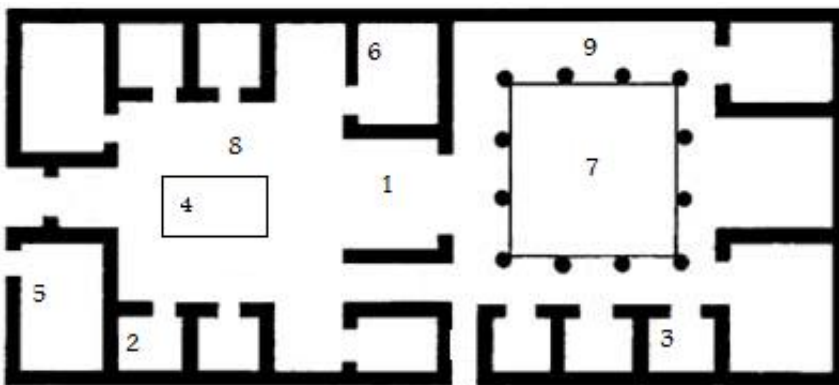
3. #5 on the floor plan = (10 points)



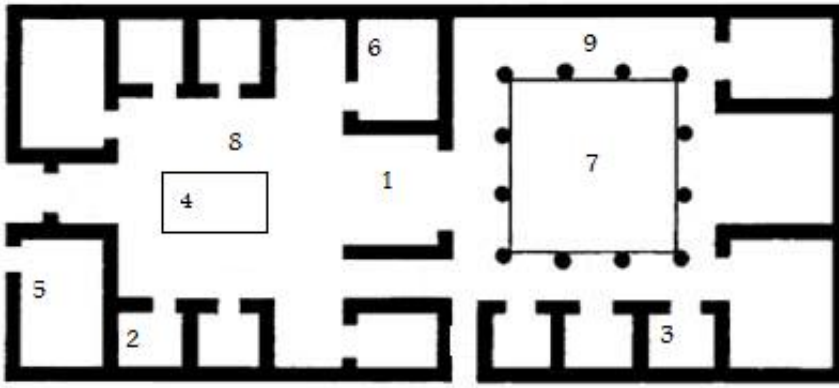
4. #4 on the floor plan (opening in roof of atrium) = (10 points)



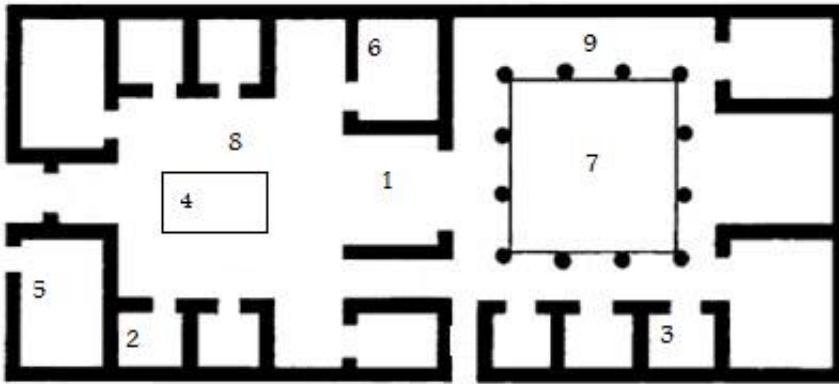
5. #9 on the floor plan (the part of the garden that's covered by a colonnaded walkway) = (10 points)



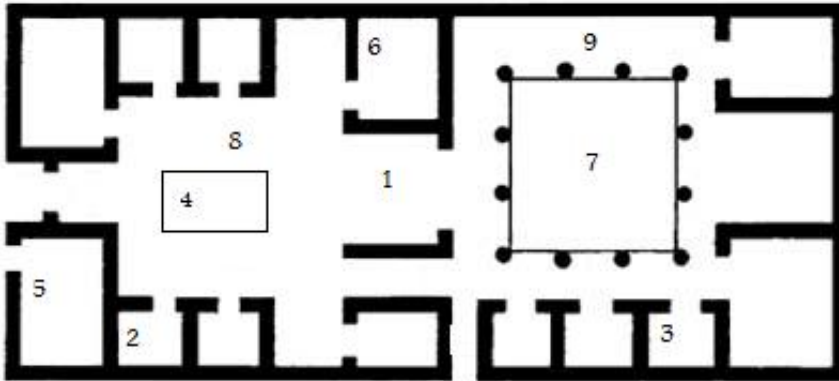
6. #3 on the floor plan (Eeeeeuuw! It's next to the latrina!) = (10 points)
-



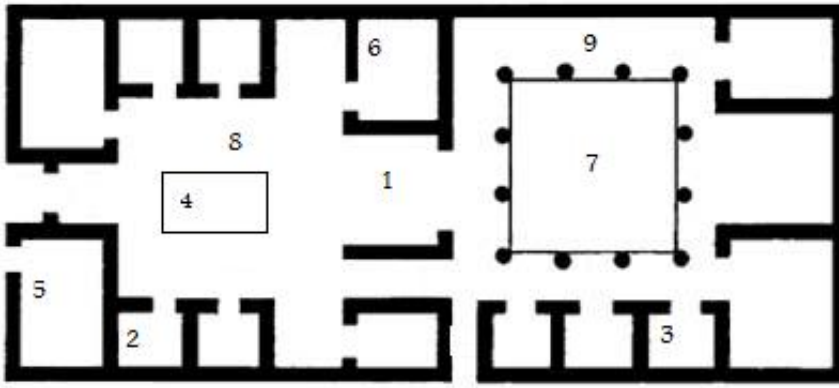
7. #6 on the floor plan = (10 points)



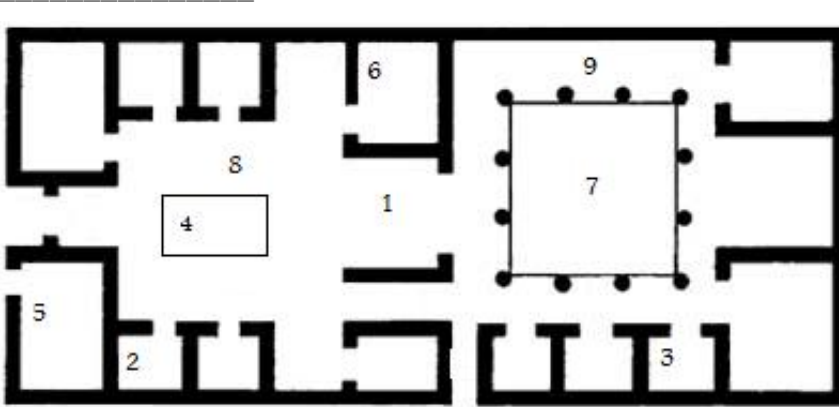
8. #8 on the floor plan (refers to the entire room around #8) = (10 points)



9. #2 on the floor plan = (10 points)



10. What is the Latin term for the basin in the atrium into which rain fell? (10 points)



Romana Domus

Identify the LATIN terms associated with the numbers on the floor plan. If you respond incorrectly, you will be given a hint with the correct answer. You may take this as many times as you like.

1. hortus
2. tablinum
3. taberna
4. compluvium
5. peristylum
6. culina
7. triclinium
8. atrium
9. cubiculum
10. impluvium